



Palmers Road, London, E2

BUTLER & STAG



Price Guide £550,000 - £575,000
Forming part of this secure development (Graphite Point), enjoying an attractive canal side setting on the banks of the Regents Canal, is this exceptional, 745 Sq/Ft two-bedroom, two-bathroom apartment boasting a secure underground allocated parking space and an array of upscale amenities.



Leasehold

- Private Balcony
- Concierge Service
- EWS1 Compliant
- Two Bedrooms
- Underground Parking Space
- Two Bathrooms
- 745 Sq/Ft Internal Living Space
- Lift Access To All Levels / Bicycle Storage

Upon entering, you are greeted by an ambiance of contemporary elegance, where sleek lines and modern design seamlessly blend with warmth and functionality. The spacious living area is bathed in natural light streaming through expansive windows.

The open-plan layout seamlessly connects the living, dining, and kitchen areas, fostering a sense of togetherness and fluidity.

The principal bedroom offers a peaceful haven complete with plush carpeting, generous built-in wardrobes, and an en-suite bathroom for added convenience and access to the private balcony. Meanwhile, the second bedroom provides flexibility for guests, a home office, or a cozy den.

Beyond the confines of the apartment, residents of Graphite Point are treated to an array of amenities designed to enhance every aspect of urban living. From the stylish communal spaces perfect for socializing, Concierge and underground parking.

Conveniently located in one of London's most vibrant neighborhoods, Graphite Point puts you at the center of it all. Explore the eclectic mix of cafes, boutiques, and cultural attractions that Bethnal Green has to offer, or venture further afield with excellent transport links connecting you to the rest of the city.

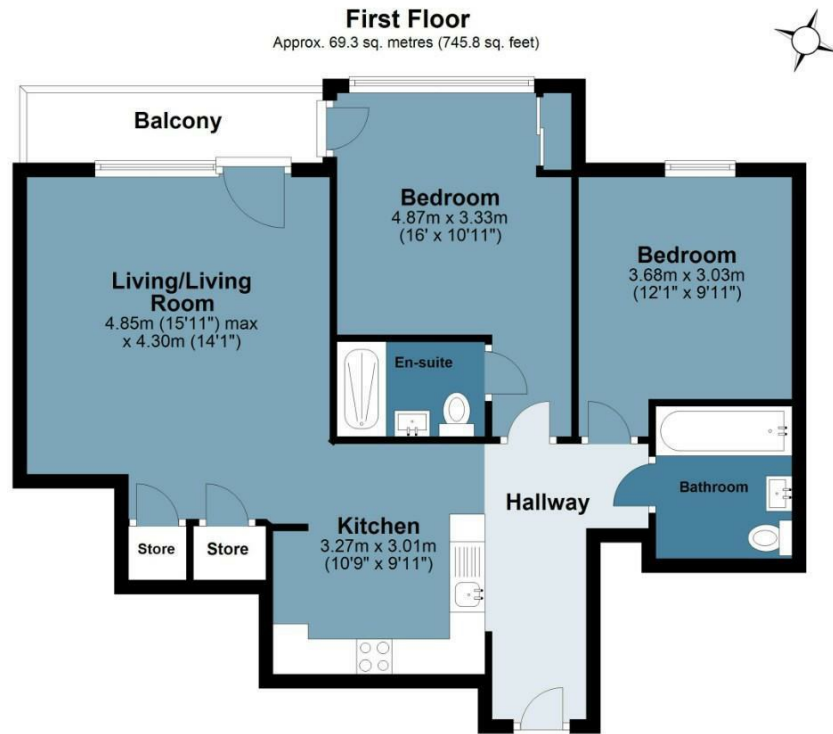




Graphite Point

Approx. Gross Internal Area 69.3 Sq M (745.8 Sq Ft)

BUTLER & STAG



Measurements are approximate and for illustration purposes only. While we do not doubt the accuracy and completeness, we advise you conduct a careful independent assessment of the property to determine monetary value.
© @modephotouk www.modephoto.co.uk

BUTLER & STAG

☎ 020 8102 1236

🏠 508 Roman Road, Bow, London, E3 5LU

✉ bow@butlerandstag.com

IMPORTANT NOTICE - These particulars have been prepared in good faith and they are not intended to constitute part of an offer or contract. We have not performed a structural survey on this property and the services, appliances and specific fittings have not been tested. All photographs, measurements, floor plans and distances referred to are given as a guide and should not be relied upon.

www.butlerandstag.uk